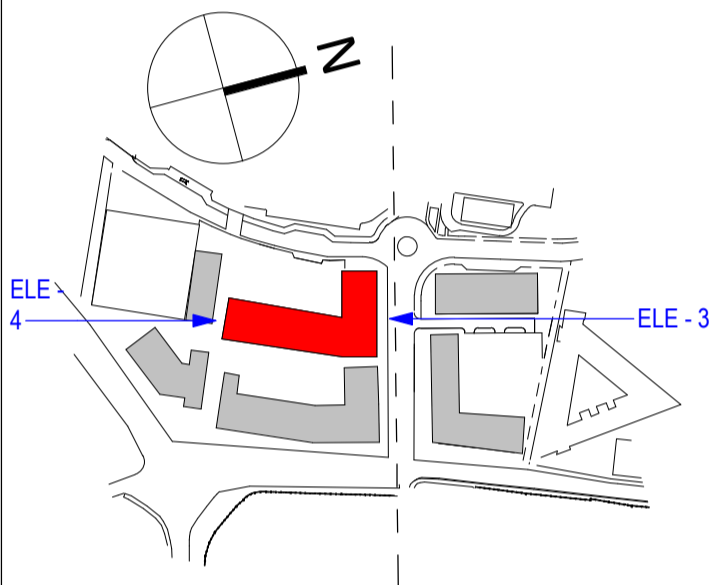


Notes:
DO NOT SCALE FROM THIS DRAWING. USE FIGURED DIMENSIONS IN ALL CASES. VERIFY DIMENSIONS ON SITE AND REPORT ANY DISCREPANCIES TO THE ARCHITECTS IMMEDIATELY. THIS DRAWING IS TO BE READ IN CONJUNCTION WITH THE ARCHITECTS SPECIFICATION. © THIS DRAWING IS COPYRIGHT AND MAY ONLY BE REPRODUCED WITH THE ARCHITECTS PERMISSION.

Drawing Notes:

Materials For Development

- 1 Selected Nap Render Finish.
- 2 Selected Brick Finish.
- 4 Selected Windows & Doors.
- 6 Selected Polyester Powder Coated High Performance Glazing System.
- 12 Selected Steel Railings To Balconies.
- 13 Selected Solid Balustrade To Balconies.
- 14 Access Gates.
- 16 Proposed Landscaping. Refer to Landscape Architects Drawings.
- 32 Residential Block Entrance.
- 33 Service Ventilation Grills.
- 34 Retail / F+B Signage.
- 36 Selected Metal Fins/Brise-Soleil.
- 41 Selected Stone Cladding.



3 BLOCK D - NORTH FACADE ALONG PROPOSED LINK ROAD
1 : 200



4 BLOCK D - SOUTH FACADE ALONG PROPOSED PEDESTRIAN LINK
1 : 200



A OCT 2019 OM STAGE 3 APPLICATION

| Rev | Date | DRN | Description |
|-----|------|-----|-------------|
| | | | |



Client Details:
GLENVEAGH LIVING

Project Details:
KNOCKNACARRA DISTRICT CENTRE, RAHOON, GALWAY.

Drawing Title:
Block D Elevations 02

| | | |
|--------------------------------|--------------------------|---------------------|
| Job No P18-179 | Date OCT 19 | Scale@A1 1 : 200 |
| Status FOR PLANNING | Drawn By: O.MORGAN | |
| Purpose PLANNING PERMISSION | Checked By: M.FREANEY | |

| | |
|--|---------------|
| Drawing Number P18179-RAU-ZZ-XX-DR-A-SLP-7207 | Revision A |
|--|---------------|